



4

3

2

1

Know your building

Self-explanatory presentation on emergency preparedness, fire and evacuation in the CREATE building



Before you continue ...

MAKE SURE
THAT YOU HAVE WATCHED THE VIDEO AND THE PRESENTATION
ON THE UNIVERSITYS EMERGENCY PREPAREDNESS,
THANK YOU!





Purpose

- ▶ The purpose of this short presentation is to give you an overview of the building.
- ▶ The presentation is self-explanatory but should not stand alone.
- ▶ It is important that you subsequently spend time familiarizing yourself with the building's layout, in particular your access to the nearest escape route and the location of evacuation equipment and the Safety Points.



Situation plan for CREATE



The assembly area is the quay area north of the building. There is NOT a sign.

Hotel

RBG6

AAU RBG14 CREATE

ABA central in the SW corner of the building. The fire department will seek information about activated detectors in this room.

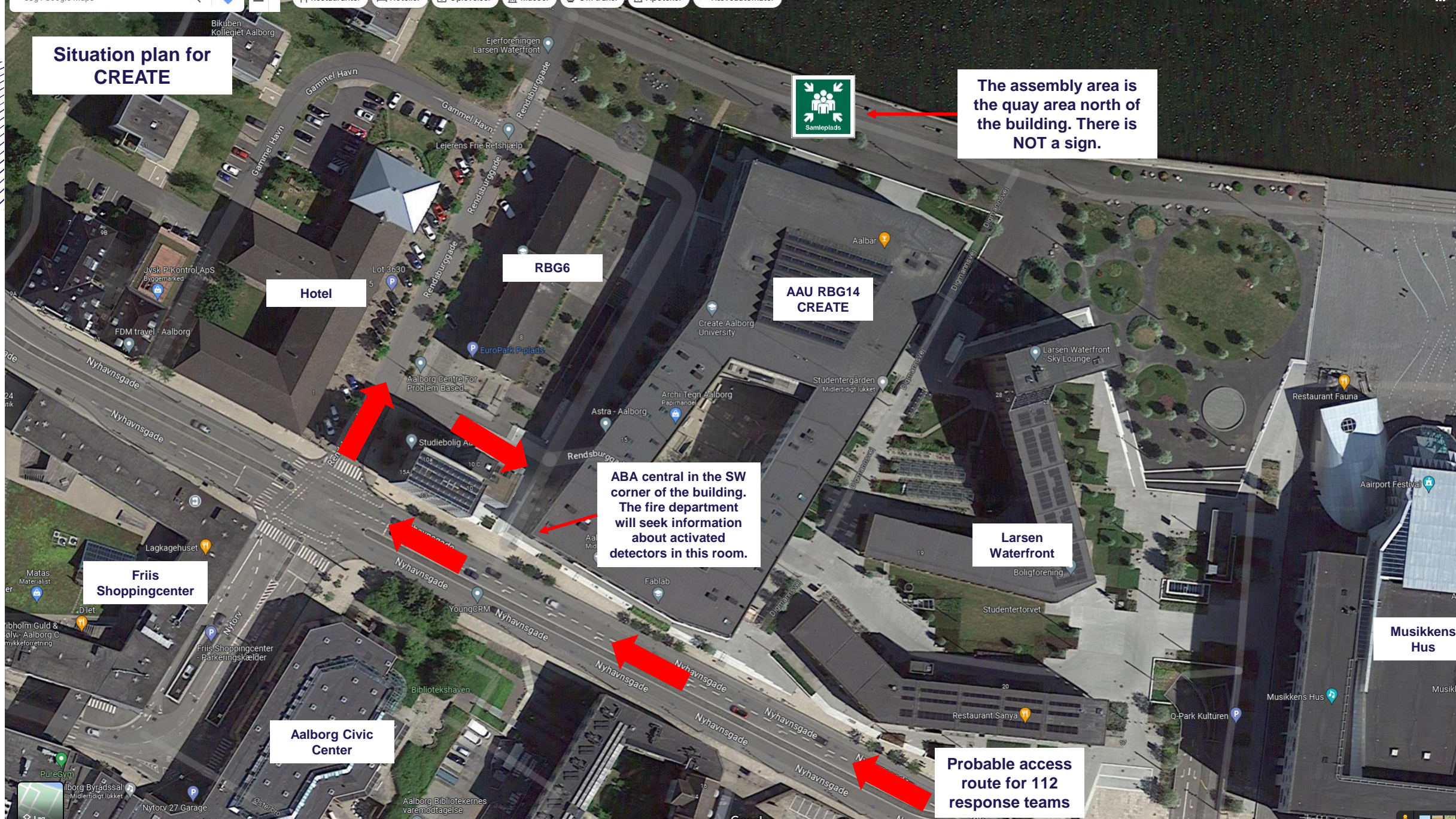
Larsen Waterfront

Friis Shoppingcenter

Musikkens Hus

Aalborg Civic Center

Probable access route for 112 response teams



Warningzone 1

Warningzone 2

Note:
The building is divided into warning zones on all floors. The entire building is therefore NOT alerted at once.
The alert is a voice alert.

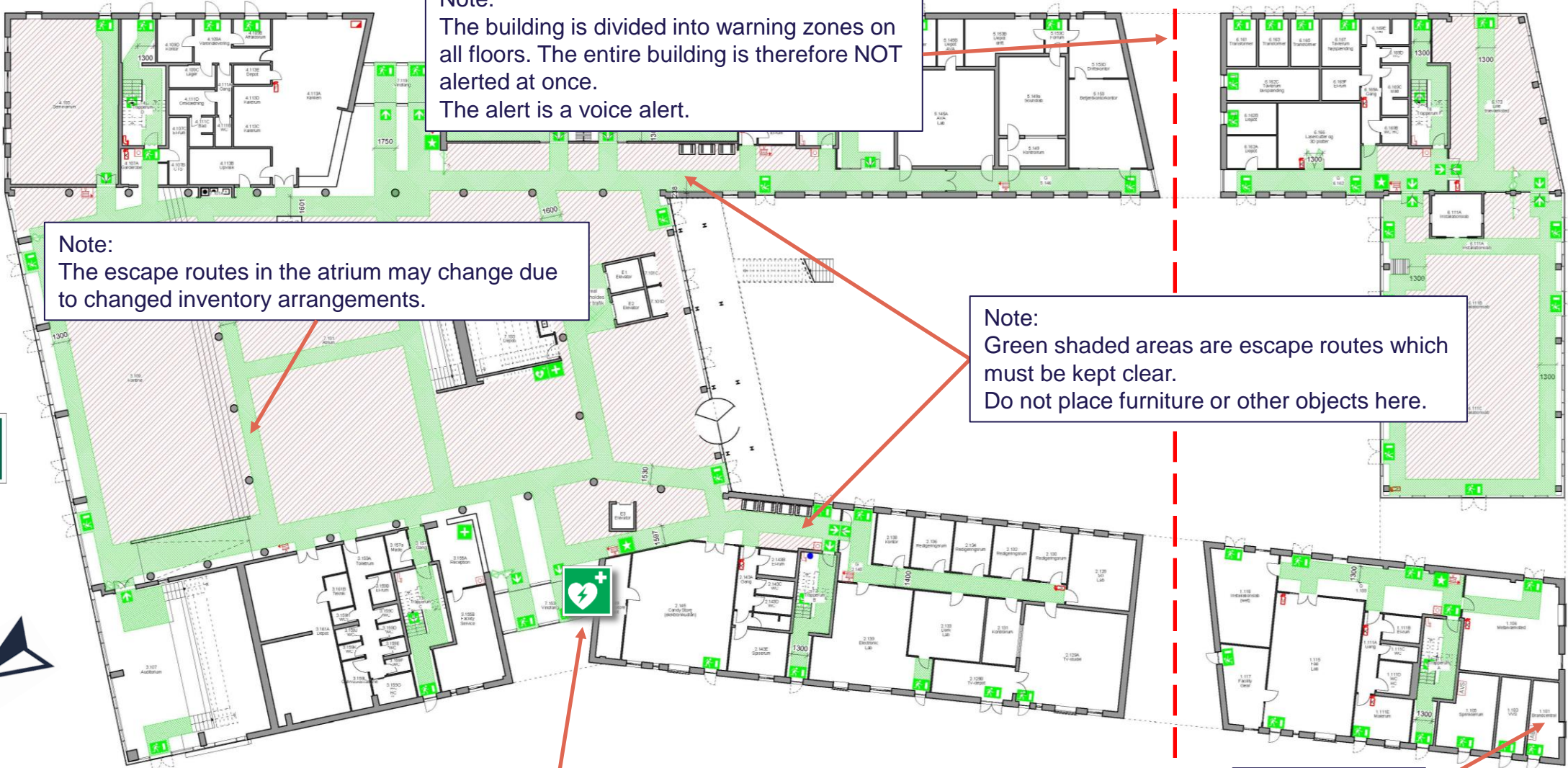
Note:
The escape routes in the atrium may change due to changed inventory arrangements.

Note:
Green shaded areas are escape routes which must be kept clear.
Do not place furniture or other objects here.

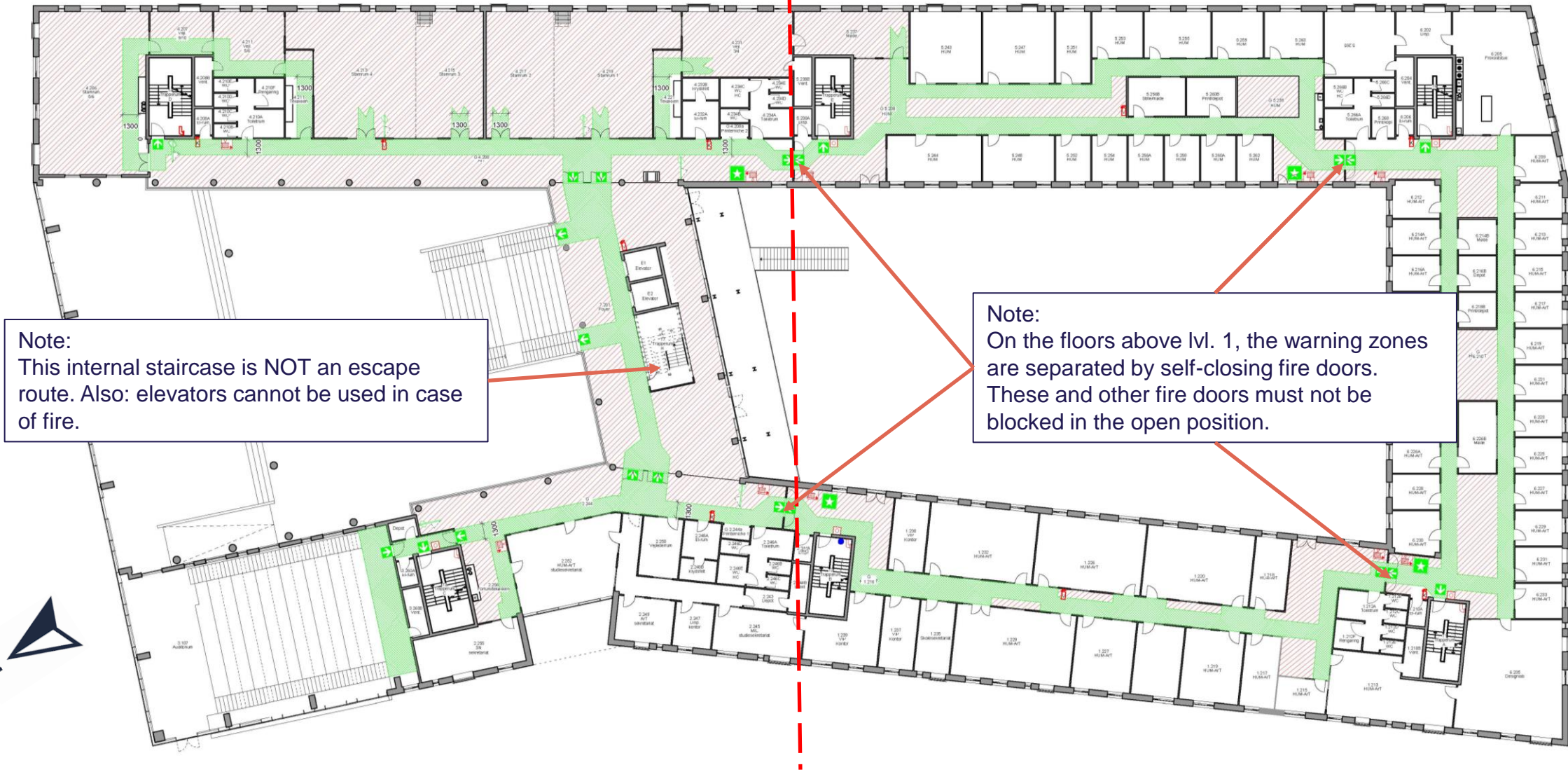
Safety Point

ABA-central

Level 1



Warningzone 1 Warningzone 3



Note:
This internal staircase is NOT an escape route. Also: elevators cannot be used in case of fire.

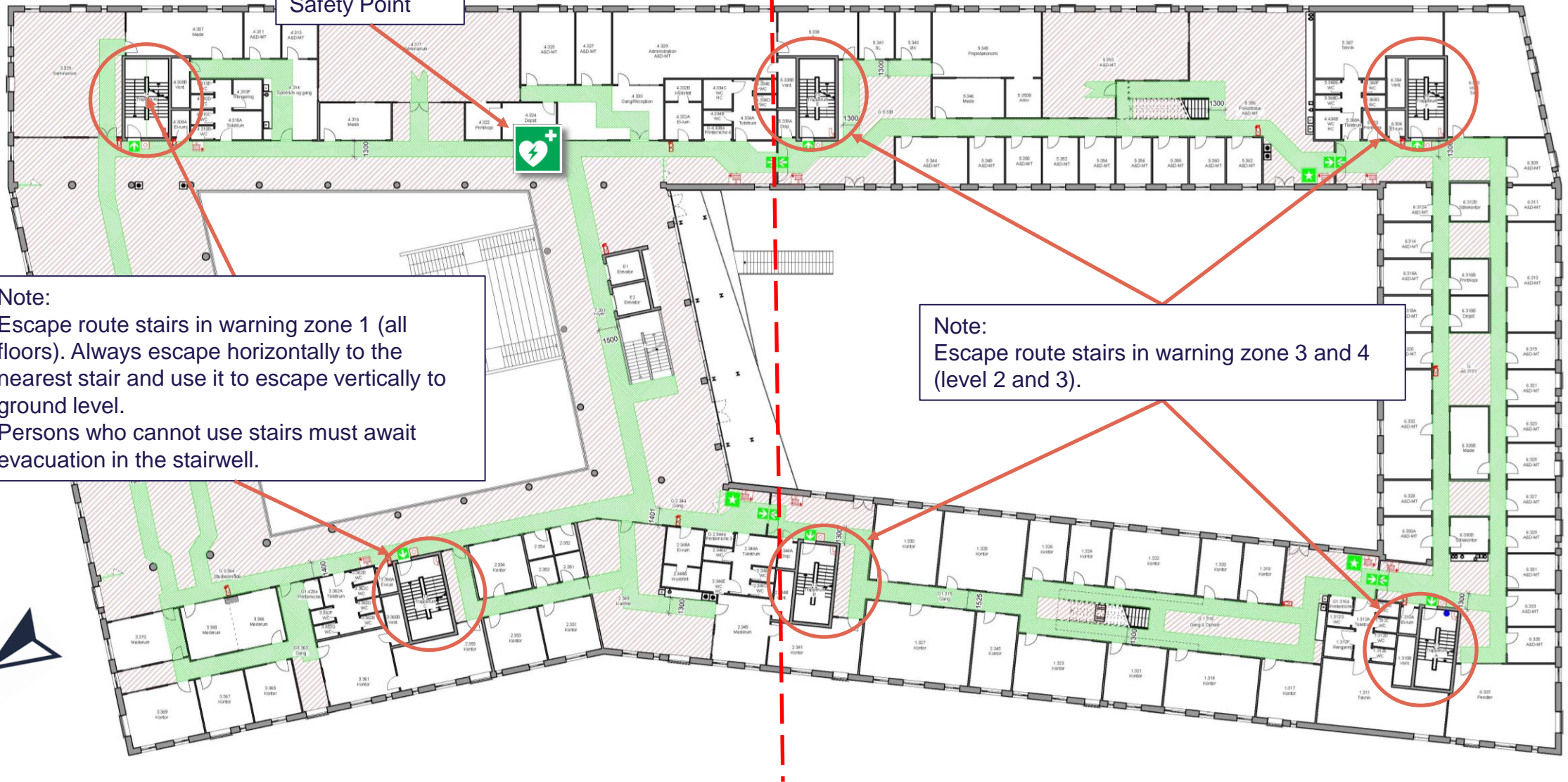
Note:
On the floors above lvl. 1, the warning zones are separated by self-closing fire doors. These and other fire doors must not be blocked in the open position.

Level 2



Warningzone 1 Warningzone 4

Safety Point



Note:
 Escape route stairs in warning zone 1 (all floors). Always escape horizontally to the nearest stair and use it to escape vertically to ground level.
 Persons who cannot use stairs must await evacuation in the stairwell.

Note:
 Escape route stairs in warning zone 3 and 4 (level 2 and 3).

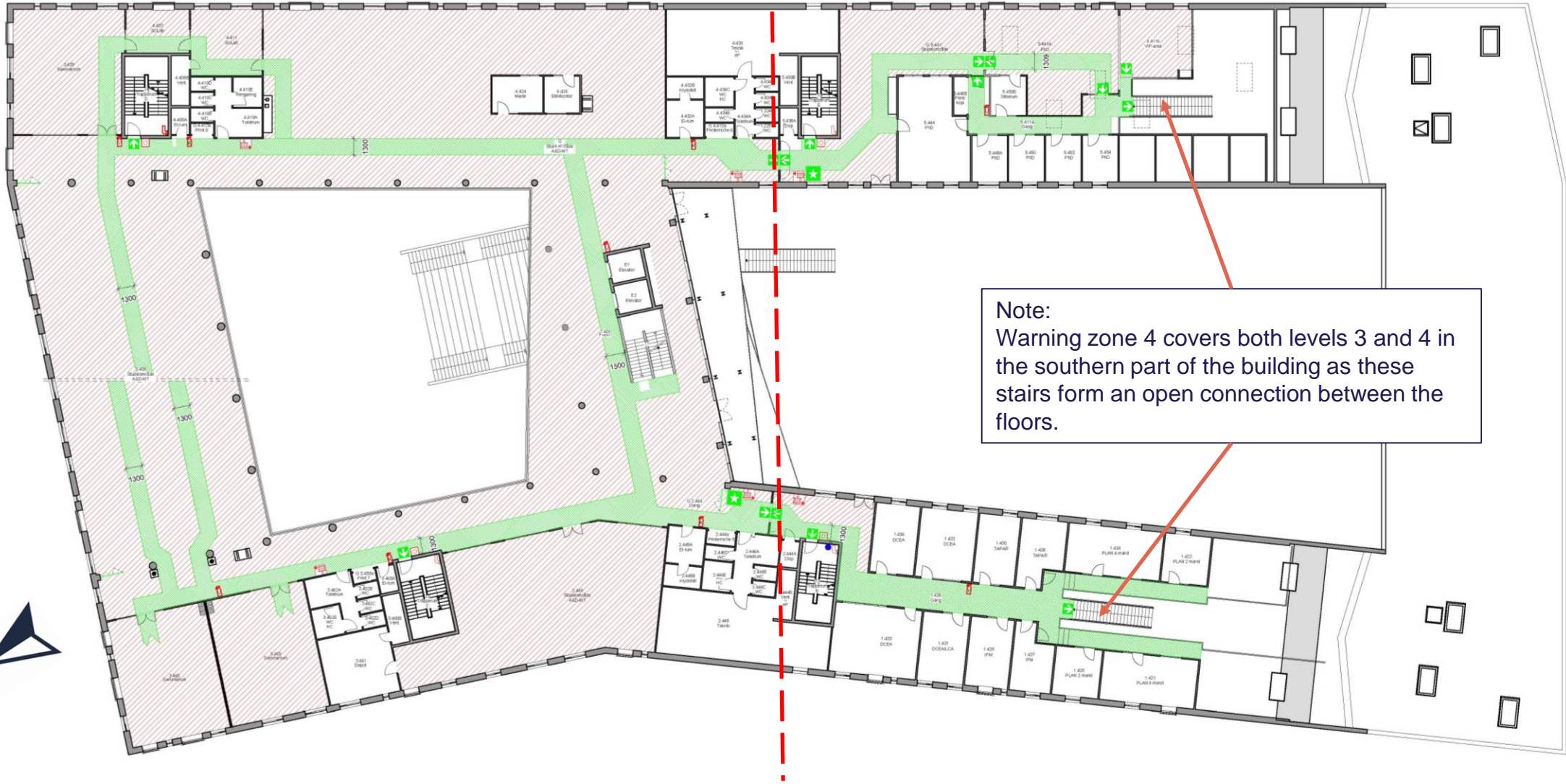


Level 3



Warningzone 1

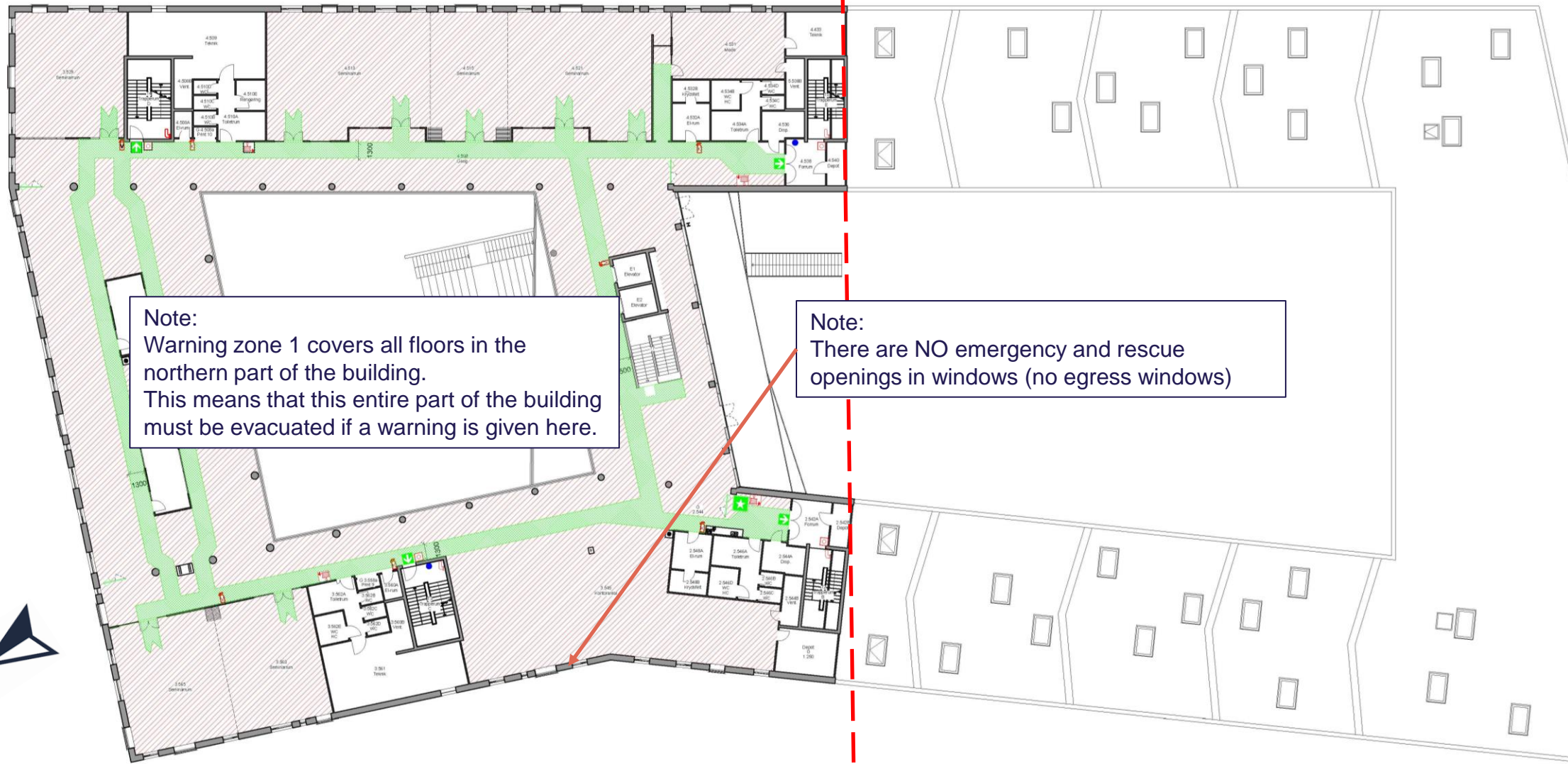
Warningzone 4



Level 4



Warningzone 1



Note:
Warning zone 1 covers all floors in the northern part of the building.
This means that this entire part of the building must be evacuated if a warning is given here.

Note:
There are NO emergency and rescue openings in windows (no egress windows)

Level 5



Take time to explore exit routes, fire doors and emergency equipment



There must be free passage for fire engines to the inner courtyard.



Note, where evacuation equipment is placed.



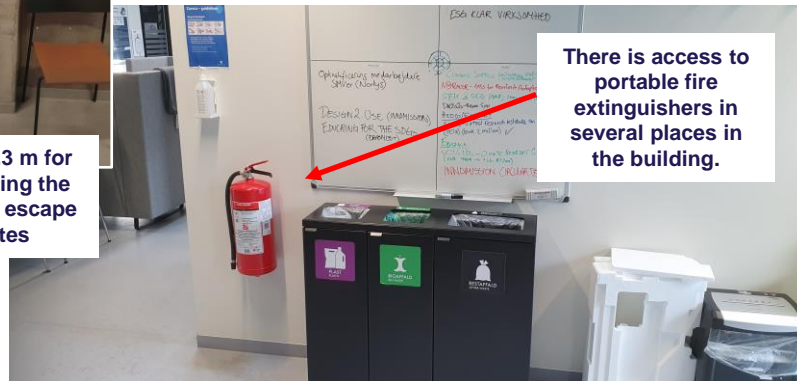
Detectors and sprinklers are found in most rooms



Note where the 2 Safety Points are located in the building. Explore the content.



Scale 1.3 m for measuring the width of escape routes

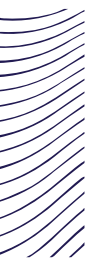


There is access to portable fire extinguishers in several places in the building.



ABA-central





Any questions?

Feel free to contact us at

arbejdsmiljoesektion@adm.aau.dk

Thank you for your attention!



AALBORG UNIVERSITET