



# Know your building

On emergency preparedness, fire and evacuation  
in Musikkens Hus





# Before you continue ...

MAKE SURE  
THAT YOU HAVE WATCHED THE VIDEO AND THE PRESENTATION  
ON THE UNIVERSITYS EMERGENCY PREPAREDNESS,  
THANK YOU!





# Purpose

- ▶ The purpose of this short presentation is to give you an overview of the building.
- ▶ The presentation is self-explanatory but should not stand alone.
- ▶ It is important that you subsequently spend time familiarizing yourself with the building's layout, in particular your access to the nearest escape route and the location of evacuation equipment and the Safety Points.



# Situation plan for NORDKRAFT

ABA central on the northside of the building. The fire department will seek information about activated detectors in this room.

Musikkens Hus

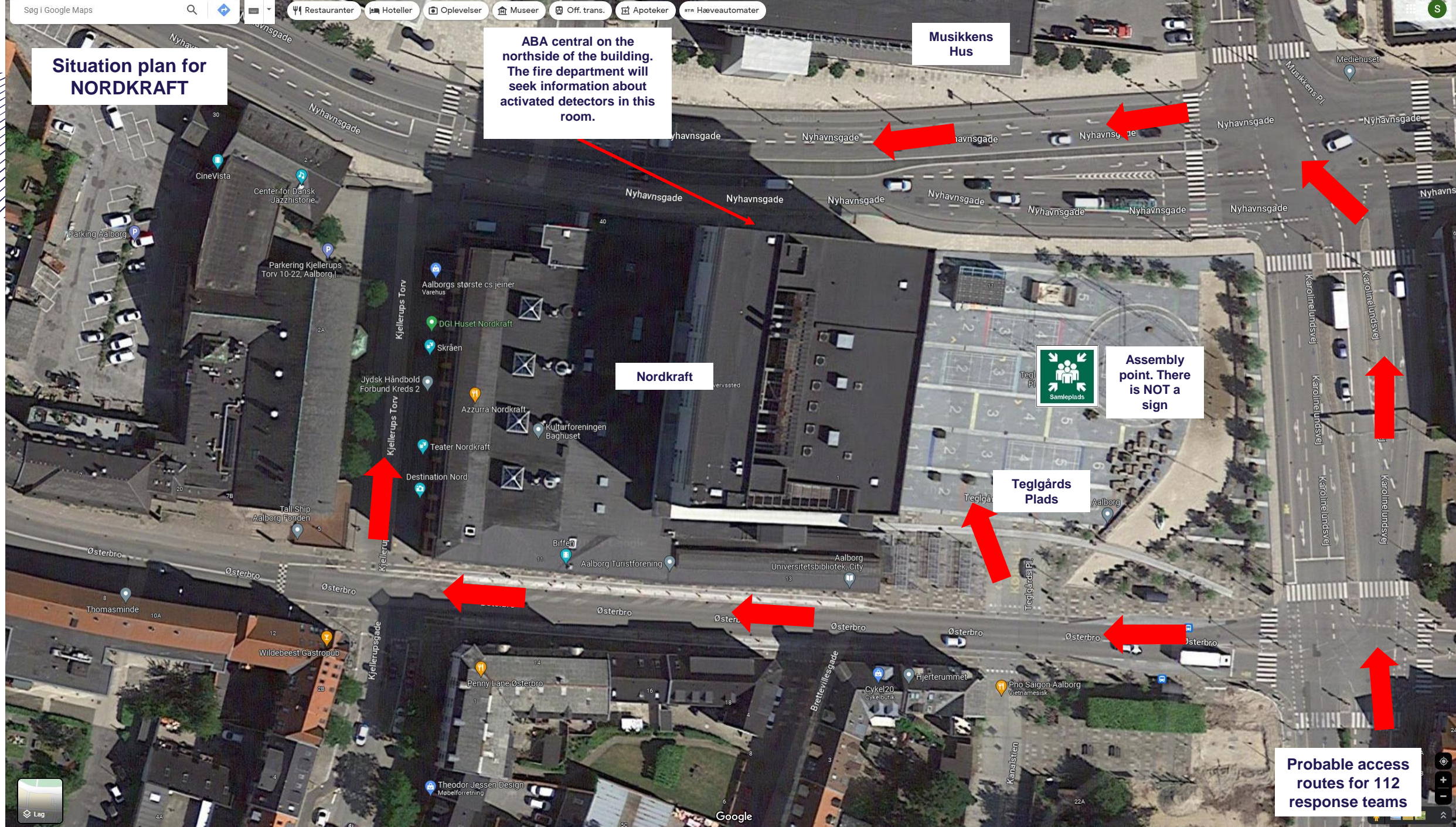
Nordkraft

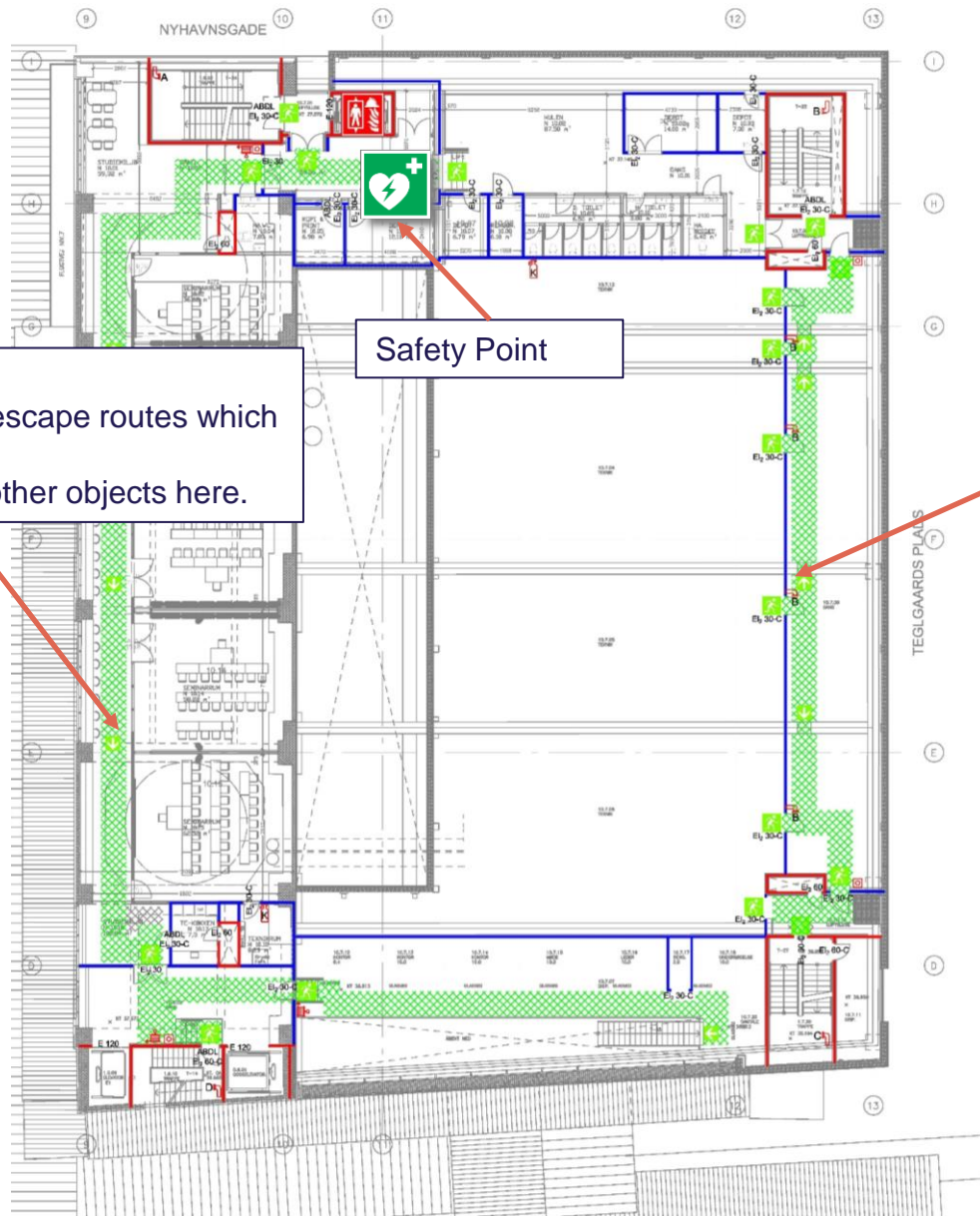


Assembly point. There is NOT a sign

Teglårds Plads

Probable access routes for 112 response teams



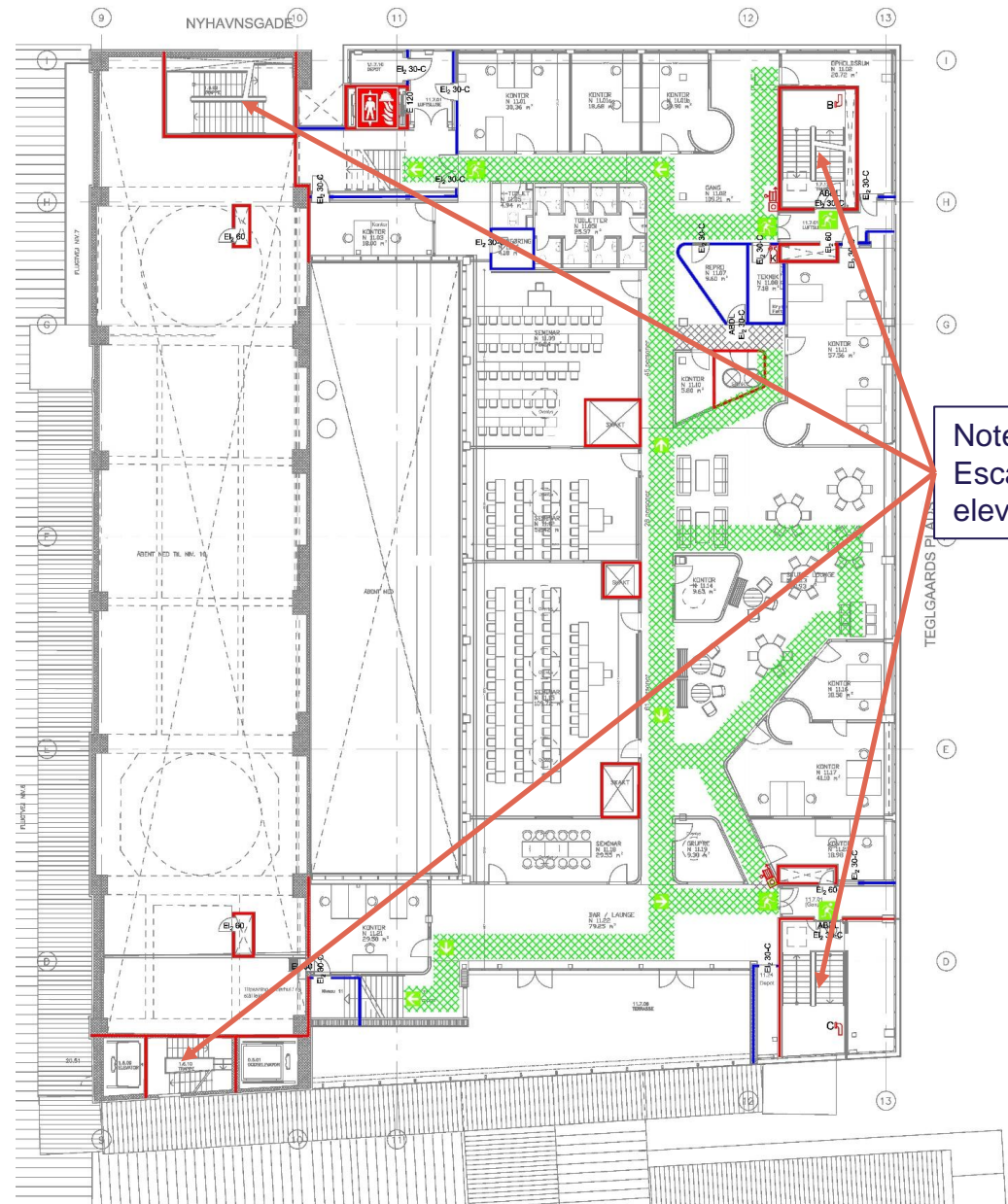
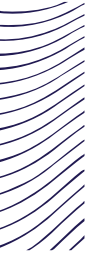


Level 10

Note:  
Green shaded areas are escape routes which must be kept clear.  
Do not place furniture or other objects here.

Note:  
Green arrows ➡ marks access to emergency exits.  
Do not block access to these exits.  
Do not block self-closing fire-rated doors.

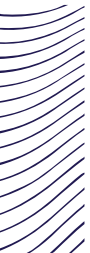
- SIGNATURFORKLARING:
- HER ER DU
  - BRANDSEKTION, EI 60 A2-s1, d0 [BS 60]
  - BRANDCELLE, EI 60 [BD 60]
  - FLUGTVEJ MIN. 130 CM
  - FLUGTVEJSRETNING
  - FLUGTVEJSDØR
  - VANDFYLDT SlangenVINDER
  - STIGRØR
  - BRANDMANDELEVATOR
  - KULSYRESLUKKER
  - ALARMTRYK (EKSTERN)



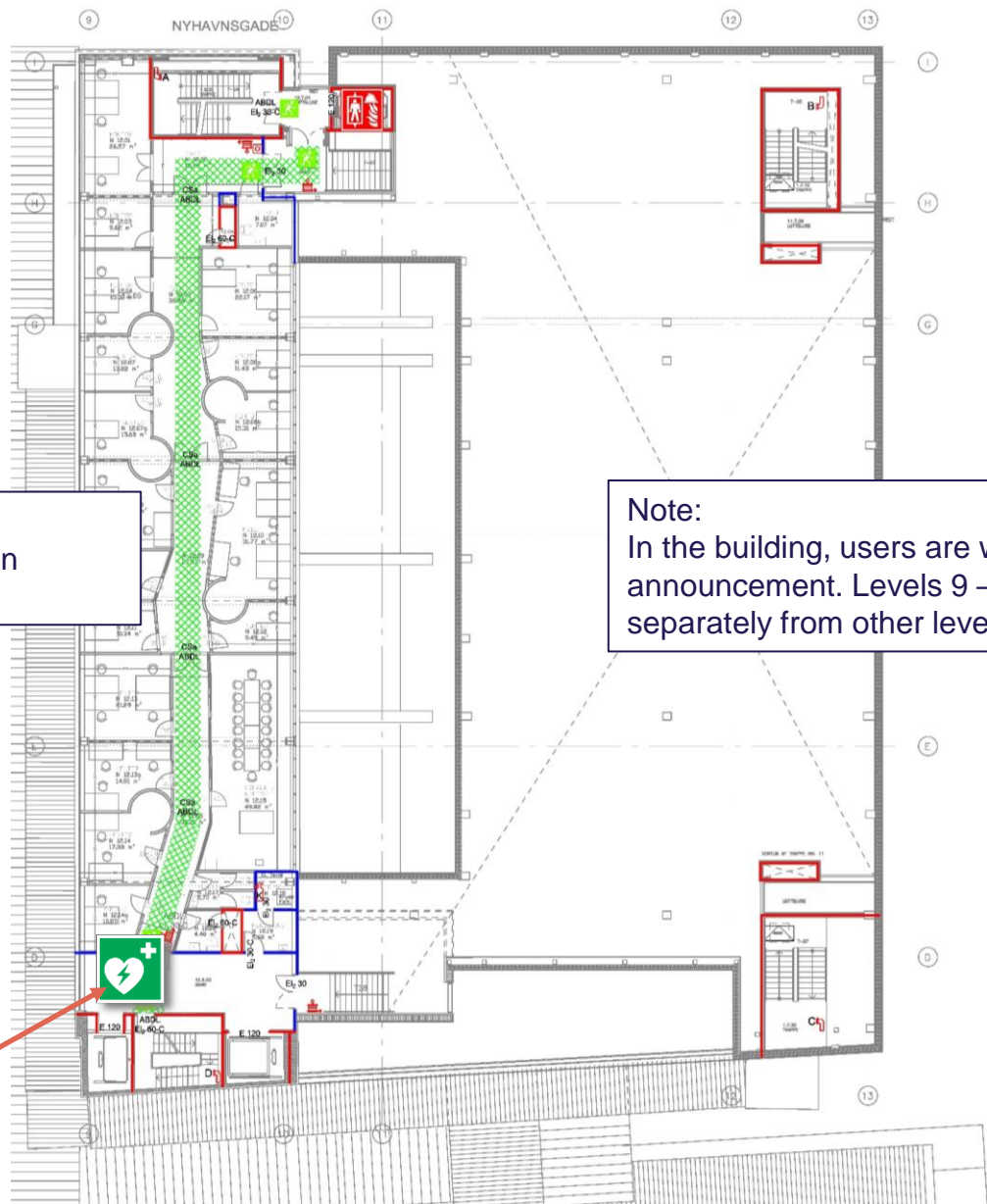
**Level 11**

**Note:**  
Escape stairs must be used instead of elevators

- SIGNATURFORKLARING:**
- HER ER DU
  - BRANDSEKTION, EI 60 A2-s1, d0 [BS 60]
  - BRANDCELLE, EI 60 [BD 60]
  - FLUGTVEJ MIN. 130 CM
  - FLUGTVEJSRETNING
  - FLUGTVEJSDØR
  - VANDFYLDT SLANGEVINDER
  - STIGRØR
  - BRANDMANDSELEVATOR
  - KULSYRESLUKKER
  - ALARMTRYK (EKSTERN)



# Level 12



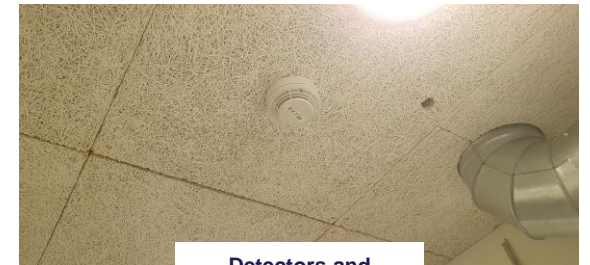
Note:  
No emergency and rescue openings in windows (egress windows)

Note:  
In the building, users are warned by a voice announcement. Levels 9 – 13 are notified separately from other levels.

Safety Point

- SIGNATURFORKLARING:**
-  HER ER DU
  -  BRANDSEKTION, EI 60 A2-s1, d0 [BS 60]
  -  BRANDCELLE, EI 60 [BD 60]
  -  FLUGTVEJ MIN. 130 CM
  -  FLUGTVEJSRETNING
  -  FLUGTVEJSDØR
  -  VANDFYLDT SLANGEVINDER
  -  STIGRØR
  -  BRANDMÅNDELEVATOR
  -  KULSVÆSLUKKER
  -  ALARMTRYK (EKSTERN)

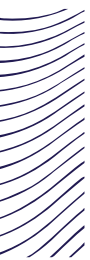
# Take time to explore exit routes, fire doors and emergency equipment



Detectors and sprinklers are found in most rooms







## Any questions?

Feel free to contact us at

[arbejdsmiljoesektion@adm.aau.dk](mailto:arbejdsmiljoesektion@adm.aau.dk)

Thank you for your attention!



AALBORG UNIVERSITET